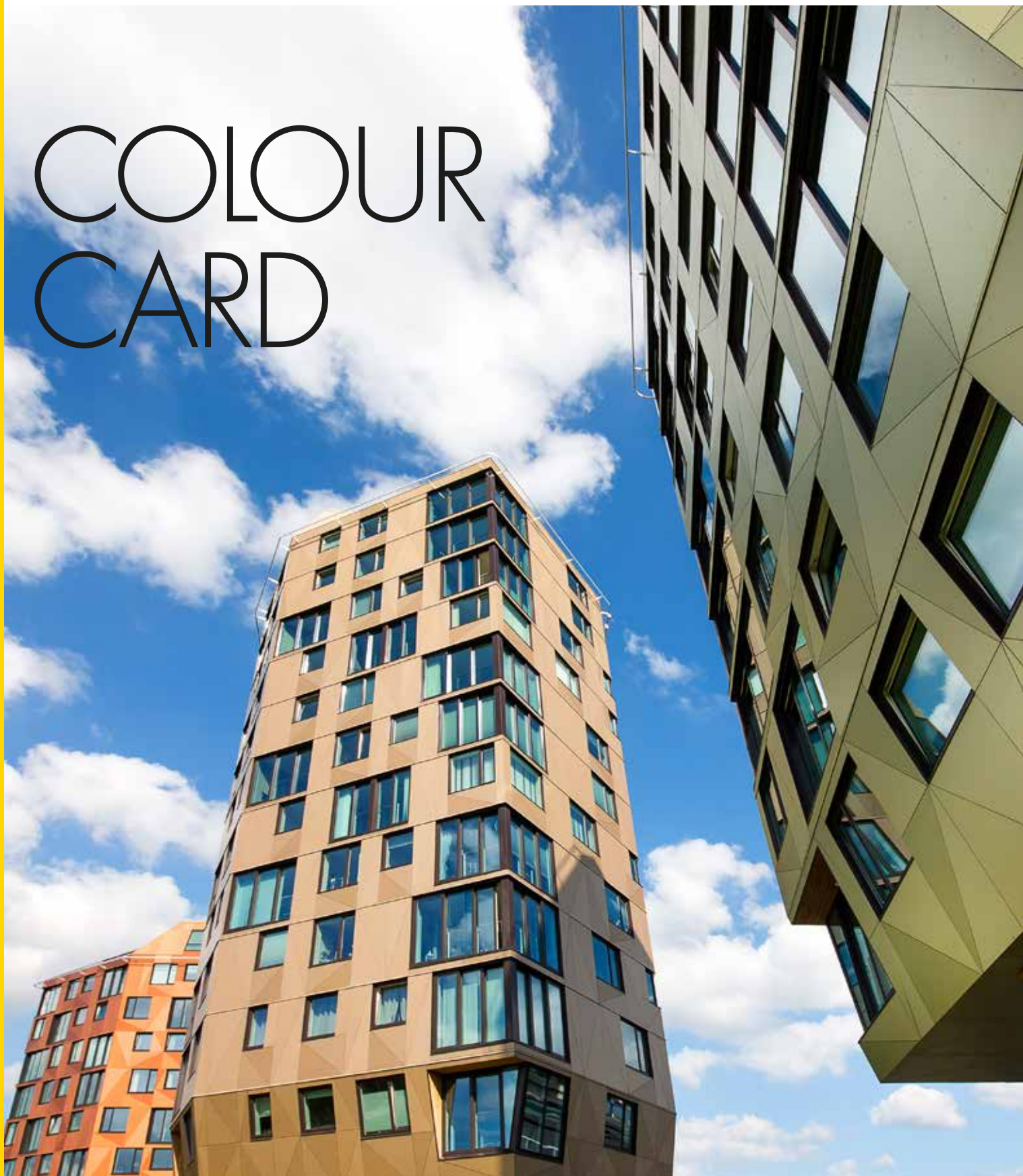


COLOUR CARD



UNI COLOURS

A05.0.0 Pure White	A21.1.0 Winter Grey	A22.2.1 Bluish Grey	A22.3.1 Ocean Grey	A28.2.1 Aquamarine	A23.0.4 Mineral Blue	A22.1.6 Royal Blue	A22.4.4 Brilliant Blue
A03.0.0 White	A03.1.0 Pastel Grey	A03.4.0 Silver Grey	A24.4.1 Steel Blue	A22.2.4 Powder Blue	A20.5.2 Lavender Blue	A22.6.2 Dark Denim	A21.5.4 Cobalt Blue
A05.1.0 Papyrus White	A32.2.1 Translucent Green	A30.3.2 Verdigris	A28.6.2 Mid Green	A26.5.4 Pacific	A20.7.2 Dark Blue	A25.8.1 Anthracite Grey	A21.7.0 Steel Grey
A04.0.0 Cream White	A37.2.3 Spring Green	A35.4.0 Cactus Green	A33.3.6 Brilliant Green	A32.7.2 Dark Green	A90.0.0 Black	A11.8.0 Ceramic Greige	NEW A19.7.1 Charcoal Grey
A04.0.1 Pearl Yellow	A41.0.6 Mojito Green	A37.0.8 Lime Green	A36.3.5 Turf Green	A34.8.1 Forest Green	A14.7.2 Deep Red Brown	A08.8.1 Dark Brown	NEW A70.0.0 Slate Grey
A04.0.2 Pale Yellow	A04.0.5 Zinc Yellow	A04.1.7 Gold Yellow	A10.1.8 Red Orange	A12.1.8 Passion Red	A12.3.7 Carmine Red	A12.6.3 Wine Red	A05.5.0 Quartz Grey
A05.1.2 Champagne	A05.1.4 Sun Yellow	A06.3.5 Ochre	A08.4.5 Rusty Red	A09.6.4 Mahogany Red	NEW A12.4.5 East Red	A06.7.1 Natural Greige	A06.5.1 Toscana Greige
A07.1.1 Sand	A08.2.3 Salmon	A10.3.4 Terra Cotta	A11.4.4 English Red	A10.4.5 Sienna Brown	A17.3.5 Cyclam	A16.5.1 Mauve	A21.5.1 Mid Grey
A05.1.1 Stone Beige	A08.2.1 Mid Beige	A08.3.1 Stone Grey	A10.6.1 Taupe				

PROJECT COLOURS

For Trespa® Meteon® Uni Colours, Metallics and Lumen, Trespa is happy to create panels in bespoke colours for your project. Almost anything is possible, just tell us what you need. For more information please contact your local Trespa representative.

WOOD DECORS

NW26 Core Ash	NW29 Woodstone	NW28 Halmstad	NW24 Grayed Cedar	NW17 Milano Grigio	NW25 Hesbania	NW22 Slate Wood
NW27 Denver Oak	NW02 Elegant Oak	NW16 Milano Terra	NW05 Loft Brown	NW11 Santos Palisander	NW13 Country Wood	NW23 Nordic Black
NW15 Milano Sabbia	NW14 French Walnut	NW03 Harmony Oak	NW10 English Cherry	NW04 Pacific Board	NEW	NW09 Wenge
NW12 Natural Bagenda	NW06 Montreux Amber	NW07 Montreux Sunglow	NW08 Italian Walnut	NW18 Light Mahogany	NW19 Dark Mahogany	

NATURALS

NA11 French Limestone	NA12 Natural Chalkstone	NA13 Silver Quartzite	NA14 Weathered Basalt	NA15 Indian Terra Cotta	NM01 Rusted Brown
NM08 Crafted White	NM02 Forged Alloy	NM04 Sintered Alloy	NM05 Hardened Brown	NEW	NEW
NM03 Corroded Green	NM06 Tempered Grey	NM07 Casted Grey	NA16 Belgian Bluestone	NA18 Natural Slate	NA19 Italian Slate
				NA17 Natural Graphite	

TO EXPERIENCE THE METALLIC EFFECT IN THE NM PRODUCTS, WE ADVISE TO ORDER A SAMPLE.

METALLICS



TO EXPERIENCE THE METALLIC EFFECT WE ADVISE TO ORDER A SAMPLE.

FOCUS



TO EXPERIENCE THE EFFECT OF THE FOCUS FINISHES, WE ADVISE TO ORDER A SAMPLE.

LUMEN



TO EXPERIENCE THE EFFECT OF THE LUMEN FINISHES, WE ADVISE TO ORDER SAMPLES.

UNI COLOURS

Colour code	Colour name	Satin				Rock*			
		■	■	■	■	■	■	■	■
A03.0.0	White	■	■	■	■	■	■	■	■
A03.1.0	Pastel Grey	■	■	■	■	■	■	■	■
A03.4.0	Silver Grey	■	■	■	■	■	■	■	■
A04.0.0	Cream White	■	■	■	■	■	■	■	■
A04.0.1	Pearl Yellow	■	■	■	■	■	■	■	■
A04.0.2	Pale Yellow	■	■	■	■	■	■	■	■
A04.0.5	Zinc Yellow	■	■	■	■	■	■	■	■
A04.1.7	Gold Yellow	■	■	■	■	■	■	■	■
A05.0.0	Pure White	■	■	■	■	■	■	■	■
A05.1.0	Papyrus White	■	■	■	■	■	■	■	■
A05.1.1	Stone Beige	■	■	■	■	■	■	■	■
A05.1.2	Champagne	■	■	■	■	■	■	■	■
A05.1.4	Sun Yellow	■	■	■	■	■	■	■	■
A05.5.0	Quartz Grey	■	■	■	■	■	■	■	■
A06.3.5	Ochre	■	■	■	■	■	■	■	■
A06.5.1	Toscana Greige	■	■	■	■	■	■	■	■
A06.7.1	Natural Greige	■	■	■	■	■	■	■	■
A07.1.1	Sand	■	■	■	■	■	■	■	■
A08.2.1	Mid Beige	■	■	■	■	■	■	■	■
A08.2.3	Salmon	■	■	■	■	■	■	■	■
A08.3.1	Stone Grey	■	■	■	■	■	■	■	■
A08.4.5	Rusty Red	■	■	■	■	■	■	■	■
A08.8.1	Dark Brown	■	■	■	■	■	■	■	■
A09.6.4	Mahogany Red	■	■	■	■	■	■	■	■
A10.1.8	Red Orange	■	■	■	■	■	■	■	■
A10.3.4	Terra Cotta	■	■	■	■	■	■	■	■
A10.4.5	Sienna Brown	■	■	■	■	■	■	■	■
A10.6.1	Taupe	■	■	■	■	■	■	■	■
A11.4.4	English Red	■	■	■	■	■	■	■	■
A11.8.0	Ceramic Greige	■	■	■	■	■	■	■	■
A12.1.8	Passion Red	■	■	■	■	■	■	■	■
A12.3.7	Carmine Red	■	■	■	■	■	■	■	■
A12.4.5	East Red	■	■	■	■	■	■	■	■
A12.6.3	Wine Red	■	■	■	■	■	■	■	■
A14.7.2	Deep Red Brown	■	■	■	■	■	■	■	■
A16.5.1	Mauve	■	■	■	■	■	■	■	■
A17.3.5	Cyclam	■	■	■	■	■	■	■	■
A19.7.1	Charcoal Grey	■	■	■	■	■	■	■	■
A20.5.2	Lavender Blue	■	■	■	■	■	■	■	■
A20.7.2	Dark Blue	■	■	■	■	■	■	■	■
A21.1.0	Winter Grey	■	■	■	■	■	■	■	■
A21.5.1	Mid Grey	■	■	■	■	■	■	■	■
A21.5.4	Cobalt Blue	■	■	■	■	■	■	■	■
A21.7.0	Steel Grey	■	■	■	■	■	■	■	■
A22.1.6	Royal Blue	■	■	■	■	■	■	■	■
A22.2.1	Bluish Grey	■	■	■	■	■	■	■	■
A22.2.4	Powder Blue	■	■	■	■	■	■	■	■
A22.3.1	Ocean Grey	■	■	■	■	■	■	■	■
A22.4.4	Brilliant Blue	■	■	■	■	■	■	■	■
A22.6.2	Dark Denim	■	■	■	■	■	■	■	■
A23.0.4	Mineral Blue	■	■	■	■	■	■	■	■
A24.4.1	Steel Blue	■	■	■	■	■	■	■	■
A25.8.1	Anthracite Grey	■	■	■	■	■	■	■	■
A26.5.4	Pacific	■	■	■	■	■	■	■	■
A28.2.1	Aquamarine	■	■	■	■	■	■	■	■
A28.6.2	Mid Green	■	■	■	■	■	■	■	■
A30.3.2	Verdigris	■	■	■	■	■	■	■	■
A32.2.1	Translucent Green	■	■	■	■	■	■	■	■
A32.7.2	Dark Green	■	■	■	■	■	■	■	■
A33.3.6	Brilliant Green	■	■	■	■	■	■	■	■
A34.8.1	Forest Green	■	■	■	■	■	■	■	■
A35.4.0	Cactus Green	■	■	■	■	■	■	■	■
A36.3.5	Turf Green	■	■	■	■	■	■	■	■
A37.0.8	Lime Green	■	■	■	■	■	■	■	■
A37.2.3	Spring Green	■	■	■	■	■	■	■	■
A41.0.6	Mojito Green	■	■	■	■	■	■	■	■
A70.0.0	Slate Grey	■	■	■	■	■	■	■	■
A90.0.0	Black	■	■	■	■	■	■	■	■

* WITH SATIN REVERSE.

WOOD DECORS

Colour code	Colour name	Satin				Matt			
		■	■	■	■	■	■	■	■
NW02	Elegant Oak	■	■	■	■	■	■	■	■
NW03	Harmony Oak	■	■	■	■	■	■	■	■
NW04	Pacific Board	■	■	■	■	■	■	■	■
NW05	Loft Brown	■	■	■	■	■	■	■	■
NW06	Montreux Amber	■	■	■	■	■	■	■	■
NW07	Montreux Sunglow	■	■	■	■	■	■	■	■
NW08	Italian Walnut	■	■	■	■	■	■	■	■
NW09	Wenge	■	■	■	■	■	■	■	■
NW10	English Cherry	■	■	■	■	■	■	■	■
NW11	Santos Palisander	■	■	■	■	■	■	■	■
NW12	Natural Bagenda	■	■	■	■	■	■	■	■
NW13	Country Wood	■	■	■	■	■	■	■	■
NW14	French Walnut	■	■	■	■	■	■	■	■
NW15	Milano Sabbia	■	■	■	■	■	■	■	■
NW16	Milano Terra	■	■	■	■	■	■	■	■
NW17	Milano Grigio	■	■	■	■	■	■	■	■
NW18	Light Mahogany	■	■	■	■	■	■	■	■
NW19	Dark Mahogany	■	■	■	■	■	■	■	■
NW22	Slate Wood	■	■	■	■	■	■	■	■
NW23	Nordic Black	■	■	■	■	■	■	■	■
NW24	Greyed Cedar	■	■	■	■	■	■	■	■
NW25	Hesbania	■	■	■	■	■	■	■	■
NW26	Core Ash	■	■	■	■	■	■	■	■
NW27	Denver Oak	■	■	■	■	■	■	■	■
NW28	Halmstad	■	■	■	■	■	■	■	■
NW29	Woodstone	■	■	■	■	■	■	■	■
NW30	Tropical Ipe	■	■	■	■	■	■	■	■

TRESPA® METEON® WOOD DECORS PANELS FEATURE A DIRECTIONAL COLOURED SURFACE. THE GRAIN OF TRESPA® METEON® WOOD DECORS RUNS THE LENGTH DIRECTION OF THE PANEL.

NATURALS

Colour code	Colour name	Matt				Matt+Rock*	
		■	■	■	■	■	■
NA11	French Limestone	■	■	■	■	■	■
NA12	Natural Chalkstone	■	■	■	■	■	■
NA13	Silver Quartzite	■	■	■	■	■	■
NA14	Weathered Basalt	■	■	■	■	■	■
NA15	Indian Terra Cotta	■	■	■	■	■	■
NA16	Belgian Bluestone	■	■	■	■	■	■
NA17	Natural Graphite	■	■	■	■	■	■
NA18	Natural Slate	■	■	■	■	■	■
NA19	Italian Slate	■	■	■	■	■	■
With metallic effect							
NM01	Rusted Brown	■	■	■	■	■	■
NM02**	Forged Alloy	■	■	■	■	■	■
NM03	Corroded Green	■	■	■	■	■	■
NM04**	Sintered Alloy	■	■	■	■	■	■
NM05**	Hardened Brown	■	■	■	■	■	■
NM06**	Tempered Grey	■	■	■	■	■	■
NM07**	Casted Grey	■	■	■	■	■	■
NM08**	Crafted White	■	■	■	■	■	■

TRESPA® METEON® NATURALS PANELS FEATURE A DIRECTIONAL COLOURED SURFACE.

* WITH SATIN REVERSE.

** DECORS HAVE GLOSS ELEMENTS IN THE SURFACE.

METALLICS

Colour code	Colour name	Satin			Rock*		
		■	■	■	■	■	■
M04.4.1	Titanium Silver	■	■	■	■	■	■
M05.5.1	Titanium Bronze	■	■	■	■	■	■
M05.6.1	Urban Brown	■	■	■	■	■	■
M06.4.1	Amber	■	■	■	■	■	■
M10.5.5	Deep Copper	■	■	■	■	■	■
M21.3.4	Azurite Blue	■	■	■	■	■	■
M21.8.1	Graphite Grey	■	■	■	■	■	■
M35.7.1	Malachite Green	■	■	■	■	■	■
M40.4.3	Mustard Yellow	■	■	■	■	■	■
M51.0.1	Aluminium Grey	■	■	■	■	■	■
M51.0.2	Urban Grey	■	■	■	■	■	■
M53.0.1	Copper Red	■	■	■	■	■	■
M53.0.2	Copper Yellow	■	■	■	■	■	■

TRESPA® METEON® METALLICS PANELS FEATURE A DIRECTIONAL COLOURED SURFACE.

* WITH SATIN REVERSE.

FOCUS

Colour code	Colour name	Diffuse		Colour code	Colour name	Diffuse	
		■	■			■	■
C08.03	Brooklyn Classic	■	■	CM03.06	Tribeca Gold	■	■
C08.21	Brooklyn Luna	■	■	CM03.10	Tribeca Bronze	■	■
C08.25	Brooklyn Antracite	■	■	CM03.16	Tribeca Iron	■	■
C01.21	Chester Grey	■	■	CM03.24	Tribeca Zinc	■	■
C01.25	Chester Anthracite	■	■	CM09.03	Brooklyn Steel	■	■
C01.70	Chester Cement	■	■	CM09.06	Brooklyn Bronze	■	■
C06.24	Bilbao Selva	■	■	CM09.51	Brooklyn Aluminium	■	■
With metallic effect							
CM06.21	Bilbao Tierra	■	■	CM05.04	Santiago Blanco	■	■
CM06.25	Bilbao Sombra	■	■	CM05.21	Santiago Gris	■	■
				CM05.25	Santiago Noche	■	■

TRESPA® METEON® FOCUS PANELS FEATURE A DIRECTIONAL COLOURED SURFACE.

LUMEN

Colour code	Colour name	Diffuse			Oblique			Specular		
		■	■	■	■	■	■	■	■	■
L0500	Athens White	■	■	■	■	■	■	■	■	■
L0651	Italian Greige	■	■	■	■	■	■	■	■	■
L0964	India Brown	■	■	■	■	■	■	■	■	■
L1245	California Red	■	■	■	■	■	■	■	■	■
L1971	Iceland Grey	■	■	■	■	■	■	■	■	■
L2151	London Grey	■	■	■	■	■	■	■	■	■
L2581	New York Grey	■	■	■	■	■	■	■	■	■
L7000	Alabama Grey	■	■	■	■	■	■	■	■	■
L9000	Metropolis Black	■	■	■	■	■	■	■	■	■
With metallic effect										
LM0561	Roman Bronze	■	■	■	■	■	■	■	■	■
LM0641	China Gold	■	■	■	■	■	■	■	■	■
LM1055	Persian Copper	■	■	■	■	■	■	■	■	■
LM2181	Siberian Platinum	■	■	■	■	■	■	■	■	■
LM5101	Paris Silver	■	■	■	■	■	■	■	■	■

TRESPA® METEON® LUMEN DIFFUSE, LUMEN OBLIQUE AND ALL LUMEN WITH METALLIC EFFECT (PRODUCTS WITH LM CODE) FEATURE A DIRECTIONAL COLOURED SURFACE.

* WITH SATIN REVERSE.

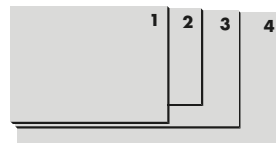
FINISHES



TYPES

- **SINGLE SIDED DECORATIVE** DECORATIVE SIDE WITH NON DECORATIVE BLACK REVERSE
- ■ **DOUBLE SIDED DECORATIVE** SAME COLOUR FOR FRONT AND REVERSE SIDE OF THE PANEL
- ■ **VARITOP** DECORATIVE SIDE WITH STANDARD WHITE DECORATIVE SATIN REVERSE (A03.0.0)
- ■ **DUOCOLOUR** DIFFERENT COLOUR FOR FRONT AND REVERSE SIDE OF THE PANEL

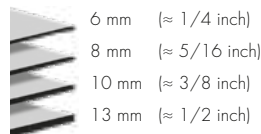
SIZES



- 1** 2550 x 1860 mm (≈ 100 x 73 inch)
- 2** 3050 x 1530 mm (≈ 120 x 60 inch)
- 3** 3650 x 1860 mm (≈ 143 x 73 inch)
- 4** 4270 x 2130 mm (≈ 168 x 83 inch)*

*THE LARGE SIZE OF THIS PANEL ALLOWS AN EFFICIENT MACHINING OF THE PRODUCT.

THICKNESSES



NOTE

PLEASE BE AWARE THAT NOT ALL PRODUCT-FINISH COMBINATIONS ARE POSSIBLE. FOR AVAILABLE SHEET SIZES, THICKNESSES AND FINISHES IN YOUR COUNTRY, PLEASE CHECK **TRESPA.INFO** FOR THE DETAILED AND UP TO DATE DELIVERY PROGRAMME AND MATERIAL PROPERTY DATASHEET. ALTERNATIVELY YOU CAN USE THE PRODUCT SELECTOR ON **TRESPA.COM** (AFTER CHOOSING THE COUNTRY WHERE THE PROJECT IS LOCATED).

ORDER SAMPLES AT TRESPA.COM



CONTACT US

TRESPA INTERNATIONAL B.V.

P.O. Box 110, 6000 AC Weert
Wetering 20, 6002 SM Weert
The Netherlands
www.trespa.com

CUSTOMER SERVICE DESK

EMEA EXPORT

Tel: +31 (0) 495 458 839
Info.Export@Trespa.com

CUSTOMER SERVICE DESK THE NETHERLANDS

Tel: +31 (0) 495 458 850
Info.Nederland@Trespa.com

TRESPA BELGIUM BVBA/SPRL

H. van Veldekesingel 150 B. 19
3500 Hasselt
Belgium
Tel: 0800 15501
Info.Belux@Trespa.com
Grand Duché de Luxembourg
Tel: +31 (0) 495 458 308

TRESPA DEUTSCHLAND GMBH

Johannstrasse 37 3rd floor
40476 Düsseldorf
Germany
Tel: 0800 186 04 22
Info.Deutschland@Trespa.com

TRESPA UK LTD.

35 Calthorpe Road
Edgbaston
Birmingham, B15 1TS
United Kingdom
Tel: 0808-2340268
Info.UK@Trespa.com

TRESPA FRANCE S.A.R.L.

15 Place Georges Pompidou
78180 Montigny-le-Bretonneux
France
Tel: +33 (0) 1 34 98 16 67
Info.France@Trespa.com

TRESPA IBERIA

Calle Ribera 5,
08003 Barcelona
Spain
Tel: +34 (0) 93 315 04 47
Info.Iberia@Trespa.com

TRESPA ITALIA SRL

Via Cappuccini, 6
20122 Milano (MI)
Italia
Tel: +31 (0) 495 458 837
Info.Italia@Trespa.com

TRESPA NORTH AMERICA LTD.

350 Fifth Avenue, Ste 4610
New York, NY 10118
United States of America
Tel: +1 800 487 3772
Info.NorthAmerica@Trespa.com

TRESPA CHILE LTDA.

Eliodoro Yáñez 2831
Torre A - Local 1
Providencia, Santiago
Chile
Tel: +56 2 4069990
Info.Chile@Trespa.com

TRESPA CHINA CO. LTD.

Room 2604-05, HuaiHai Plaza
No. 1045 HuaiHai Road (central)
ShangHai 200031
P.R. China
Tel: +86 (0) 21 6288 1299
Info.China@Trespa.com

CUSTOMER SERVICE DESK ASIA/PACIFIC

Tel: +86 (0) 21 5465 8388
Info.APAC@Trespa.com

VISIT US

TRESPA DESIGN CENTRE WEERT

Wetering 20
6002 SM Weert
The Netherlands
Tel: +31 (0) 495 458 845
TDC.Weert@Trespa.com
www.trespa.com/tdc

TRESPA DESIGN CENTRE BARCELONA

Calle Ribera 5,
08003 Barcelona
Spain
Tel: +34 (0) 93 295 4193
TDC.Barcelona@Trespa.com
www.trespa.com/tdc

TRESPA DESIGN CENTRE SANTIAGO

Eliodoro Yáñez 2831
Torre A - Local 1
Providencia, Santiago
Chile
Tel: +56 2 4069990
TDC.Santiago@Trespa.com
www.trespa.com/tdc

FOLLOW US



DISCLAIMER

GENERAL

These terms apply to the use of this document and such use automatically means that the other party agrees to these terms. The information provided by Trespa International B.V. ("Trespa") in this document is solely indicative. Trespa is unable to warrant the accuracy and completeness of this information. Trespa may change the information included in this document at any time and without further notice. Trespa's customers and third parties must ascertain that they have the most recent document (for the most recent version, please consult: www.trespa.com). No rights can be derived from the information provided; the use of the information is at the other party's risk and responsibility. Trespa does not warrant that the information in this document is suitable for the purpose for which it is consulted by the other party. This document does not contain any design, structural calculation, estimate or other warranty or representation that customers and third parties may rely on. This document does not guarantee any properties of Trespa products. Colours used in Trespa's communications (including but not limited to printed matter) and in samples of Trespa's products may differ from the colours of the Trespa products to be supplied. Samples are not intended for use in product tests and are not representative of characteristics of the Trespa

products. Trespa's products and samples are produced within the specified colour tolerances and the colours (of production batches) may differ, even if the same colour is used. The viewing angle also influences the colour perception. Metallic panels feature a surface whose colour appears to change based on the direction from which it is viewed. The specified colour stability and colour specifications relate only to the decorative surface of the Trespa products, not to the core material and samples of the Trespa products. Trespa products are delivered ex-works with straight, sawn sides. Customers and third parties must have a professional adviser inform them about (the suitability of) the Trespa products for all desired applications and about applicable laws and regulations. Trespa does not warrant the above. The most recent version of the current delivery programme and the Material Properties Datasheet can be found at www.trespa.info. Only the information in the most recent and valid Material Properties Datasheet should be used to select and provide advice regarding Trespa products. Trespa reserves the right to change (the specifications for) its products without prior notice.

LIABILITY

Trespa is not liable (neither contractual nor non-contractual) for any damage arising from or

related to the use of this document, except if and to the extent that such damage is the result of wilful misconduct or gross negligence on the part of Trespa and/or its management. The limitation of liability applies to all parties affiliated with Trespa, including but not limited to its officers, directors, employees, affiliated enterprises, suppliers, distributors, agents, and representatives.

GENERAL CONDITIONS

All oral and written statements, offers, quotations, sales, supplies, deliveries and/or agreements and all related activities of Trespa are governed by the Trespa General Terms and Conditions of Sale (*Algemene verkoopvoorwaarden Trespa International B.V.*) filed with the Chamber of Commerce and Industry for Noord- en Midden-Limburg in Venlo (NL) on February 20th, 2015 under number 24270677, which can be found on and downloaded from the Trespa website, www.trespa.com/documentation. All oral and written statements, offers, quotations, sales, supplies, deliveries and/or agreements and all related work of Trespa North America, Ltd. governed by the Trespa North America General Terms and Conditions of Sale, which can be found on and downloaded from the Trespa website, www.trespa.com/documentation. A copy of these general conditions of sale will be provided free of

charge on request. All general terms and conditions other than the conditions mentioned above are dismissed and do not apply, regardless of whether such terms and conditions are referred to on requests for offers, offer confirmations, stationery and/or other documents of the other party, even if Trespa does not expressly object to such terms and conditions.

INTELLECTUAL PROPERTY

All intellectual property rights and other rights regarding the content of this document (including logos, text and photographs) are owned by Trespa and/or its licensors. Any use of the content of this document, including distribution, reproduction, disclosure, storage in an automated data file or the dispatch of such a file without Trespa's prior written consent is explicitly prohibited. * Trespa, Meteon, Athlon, TopLab, TopLab^{PLUS}, TopLab^{ECO-FIBRE}, TopLab^{VERTICAL}, TopLab^{BASE}, Virtuo, Izeon, Pura NFC, Volkern, Trespa Essentials and Mystic Metallics are registered trademarks of Trespa.

QUESTIONS

Should you have any questions or comments, please do not hesitate to contact Trespa.



I2407-431603 ■ VERSION 3.0
BROCHURE CODE I2407 ■ DATE 01-2019

VISIT TRESPA.COM FOR THE MOST UP TO DATE VERSION OF THIS DOCUMENT.

TRESPA[®]